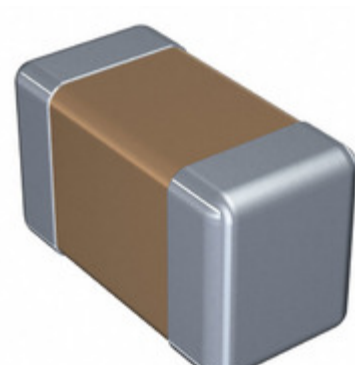


## C0603C392K8JAC7867



**Part Number:** C0603C392K8JAC7867  
**Manufacturer:** KEMET  
**Description:** CAP CER 3900PF 10V U2J 0603  
**Data sheet:** [U2J Dielectric, 10-50 VDC](#)

**RoHS Status:** Lead free / RoHS Compliant  
**Ship From:** Hong Kong  
**Shipment Way:** DHL/Fedex/TNT/UPS/EMS

Images are for reference only.  
 See Product Specifications for product details.  
 Buy C0603C392K8JAC7867 with confidence from  
 Component-World.HK, 1 Year Warranty

[Request For Quotation](#)

### PRODUCT PARAMETER

<b>Part Number</b>	C0603C392K8JAC7867	<b>Manufacturer</b>	<a href="#">KEMET</a>
<b>Description</b>	CAP CER 3900PF 10V U2J 0603	<b>Lead Free Status / RoHS Status</b>	Lead free / RoHS Compliant
<b>Quantity Available</b>	1350856 pcs	<b>Data sheet</b>	<a href="#">U2J Dielectric, 10-50 VDC</a>
<b>Category</b>	<a href="#">Capacitors</a>	<b>Voltage - Rated</b>	10V
<b>Tolerance</b>	±10%	<b>Thickness (Max)</b>	0.034" (0.87mm)
<b>Temperature Coefficient</b>	U2J	<b>Size / Dimension</b>	0.063" L x 0.032" W (1.60mm x 0.80mm)
<b>Series</b>	C	<b>Ratings</b>	-
<b>Packaging</b>	Tape & Reel (TR)	<b>Package / Case</b>	0603 (1608 Metric)
<b>Other Names</b>	C0603C392K8JACTU	<b>Operating Temperature</b>	-55°C ~ 125°C
<b>Mounting Type</b>	Surface Mount, MLCC	<b>Moisture Sensitivity Level (MSL)</b>	1 (Unlimited)
<b>Lead Style</b>	-	<b>Lead Spacing</b>	-
<b>Lead Free Status / RoHS Status</b>	Lead free / RoHS Compliant	<b>Height - Seated (Max)</b>	-
<b>Features</b>	Low Dissipation Factor, Low ESL	<b>Failure Rate</b>	-
<b>Detailed Description</b>	3900pF ±10% 10V Ceramic Capacitor U2J 0603 (1608 Metric)	<b>Capacitance</b>	3900pF
<b>Applications</b>	General Purpose		

Component-World.com is a Reliable Stocking Distributor of Electronic Components. We specialize in all KEMET series electronic components. We have 1350856 pieces of KEMET C0603C392K8JAC7867 in stock available now. Request a quote from electronics components distributor at Component-World.com, our sales team will contact you within 24 hours.  
 RFQ Email: [info@Components-World.com](mailto:info@Components-World.com)

### RELATED PRODUCTS

	<b>Part#:</b> <a href="#">C0603C392M4HACAUTO</a> <b>Description:</b> CAP CER 0603 3.9NF 16V ULTRA STA	<b>Manufacturers:</b> <a href="#">KEMET</a>	<a href="#">RFQ</a>
	<b>Part#:</b> <a href="#">C0603C392M3JAC7867</a> <b>Description:</b> CAP CER 3900PF 25V U2J 0603	<b>Manufacturers:</b> <a href="#">KEMET</a>	<a href="#">RFQ</a>
	<b>Part#:</b> <a href="#">C0603C392K5RALTU</a> <b>Description:</b> CAP CER 3900PF 50V X7R 0603	<b>Manufacturers:</b> <a href="#">KEMET</a>	<a href="#">RFQ</a>
	<b>Part#:</b> <a href="#">C0603C392M4RACTU</a> <b>Description:</b> CAP CER 3900PF 16V X7R 0603	<b>Manufacturers:</b> <a href="#">KEMET</a>	<a href="#">RFQ</a>
	<b>Part#:</b> <a href="#">C0603C392K4RAC7867</a> <b>Description:</b> CAP CER 3900PF 16V X7R 0603	<b>Manufacturers:</b> <a href="#">KEMET</a>	<a href="#">RFQ</a>
	<b>Part#:</b> <a href="#">C0603C392K5RACAUTO</a> <b>Description:</b> CAP CER 3900PF 50V X7R 0603	<b>Manufacturers:</b> <a href="#">KEMET</a>	<a href="#">RFQ</a>
	<b>Part#:</b> <a href="#">C0603C392K8HAC7867</a> <b>Description:</b> CAP CER 0603 3.9NF 10V ULTRA STA	<b>Manufacturers:</b> <a href="#">KEMET</a>	<a href="#">RFQ</a>
	<b>Part#:</b> <a href="#">C0603C392K5JAC7867</a> <b>Description:</b> CAP CER 3900PF 50V U2J 0603	<b>Manufacturers:</b> <a href="#">KEMET</a>	<a href="#">RFQ</a>
	<b>Part#:</b> <a href="#">C0603C392K8RACTU</a> <b>Description:</b> CAP CER 3900PF 10V X7R 0603	<b>Manufacturers:</b> <a href="#">KEMET</a>	<a href="#">RFQ</a>
	<b>Part#:</b> <a href="#">C0603C392K9RALTU</a> <b>Description:</b> CAP CER 3900PF 6.3V X7R 0603	<b>Manufacturers:</b> <a href="#">KEMET</a>	<a href="#">RFQ</a>
	<b>Part#:</b> <a href="#">C0603C392K8HACAUTO</a> <b>Description:</b> CAP CER 0603 3.9NF 10V ULTRA STA	<b>Manufacturers:</b> <a href="#">KEMET</a>	<a href="#">RFQ</a>
	<b>Part#:</b> <a href="#">C0603C392M4JACAUTO</a> <b>Description:</b> CAP CER 3900PF 16V U2J 0603	<b>Manufacturers:</b> <a href="#">KEMET</a>	<a href="#">RFQ</a>
	<b>Part#:</b> <a href="#">C0603C392M4JAC7867</a> <b>Description:</b> CAP CER 3900PF 16V U2J 0603	<b>Manufacturers:</b> <a href="#">KEMET</a>	<a href="#">RFQ</a>
	<b>Part#:</b> <a href="#">C0603C392M4HAC7867</a> <b>Description:</b> CAP CER 0603 3.9NF 16V ULTRA STA	<b>Manufacturers:</b> <a href="#">KEMET</a>	<a href="#">RFQ</a>
	<b>Part#:</b> <a href="#">C0603C392K8JACAUTO</a> <b>Description:</b> CAP CER 3900PF 10V U2J 0603	<b>Manufacturers:</b> <a href="#">KEMET</a>	<a href="#">RFQ</a>
	<b>Part#:</b> <a href="#">C0603C392K5RACTU</a> <b>Description:</b> CAP CER 3900PF 50V X7R 0603	<b>Manufacturers:</b> <a href="#">KEMET</a>	<a href="#">RFQ</a>
	<b>Part#:</b> <a href="#">C0603C392K4JACAUTO</a> <b>Description:</b> CAP CER 3900PF 16V U2J 0603	<b>Manufacturers:</b> <a href="#">KEMET</a>	<a href="#">RFQ</a>
	<b>Part#:</b> <a href="#">C0603C392M3JACAUTO</a> <b>Description:</b> CAP CER 3900PF 25V U2J 0603	<b>Manufacturers:</b> <a href="#">KEMET</a>	<a href="#">RFQ</a>
	<b>Part#:</b> <a href="#">C0603C392K4JAC7867</a> <b>Description:</b> CAP CER 3900PF 16V U2J 0603	<b>Manufacturers:</b> <a href="#">KEMET</a>	<a href="#">RFQ</a>
	<b>Part#:</b> <a href="#">C0603C392K5JACAUTO</a> <b>Description:</b> CAP CER 3900PF 50V U2J 0603	<b>Manufacturers:</b> <a href="#">KEMET</a>	<a href="#">RFQ</a>

### Related keywords for C0603C392K8JAC7867

KEMET C0603C392K8JAC7867	C0603C392K8JAC7867 distributor	C0603C392K8JAC7867 supplier	C0603C392K8JAC7867 price
C0603C392K8JAC7867 download datasheet	C0603C392K8JAC7867 datasheet	C0603C392K8JAC7867 stock	buy C0603C392K8JAC7867
KEMET C0603C392K8JAC7867	Kemet [MIL] C0603C392K8JAC7867		